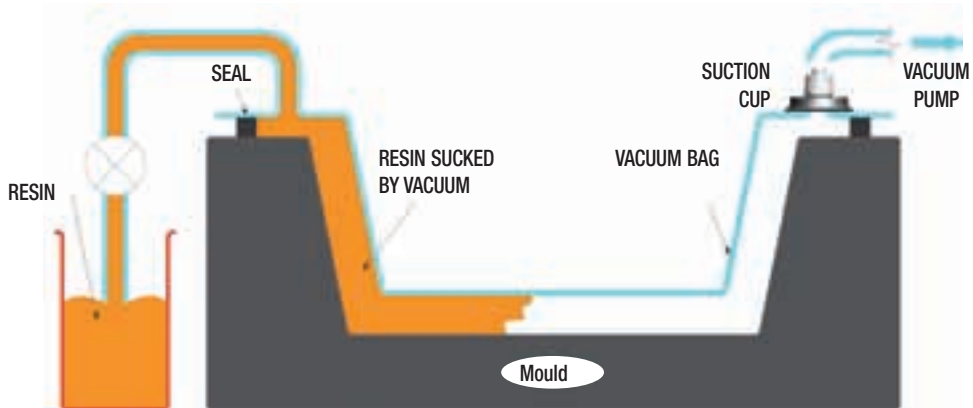


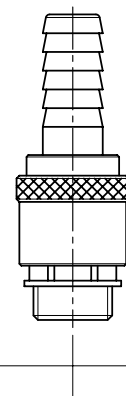
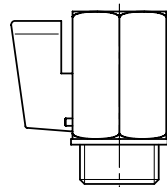
SUCTION VALVES FOR RESIN INFUSION MOULD

These suction valves, once laid on the resin infusion mould connections, allow a quick vacuum connection and guarantee a perfect seal. They are made with silicon rubber, while their support is made with anodised aluminium. Manual 2-way valves, quick couplers or simply flexible pipe fittings can be assembled onto these valves. They are available in the two versions shown below, but can be supplied in different sizes and shapes upon request.

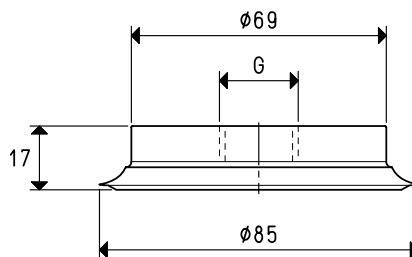
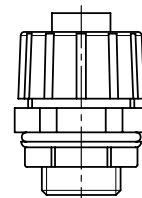


Quick coupling

2-way manual valve



TPR pipe fitting



| Art. | Max. capacity recommended cum/h | Manual 2-way valve art. | Quick coupler art. | TPR pipe fitting art. | Weight g | G |
|-----------------|---------------------------------|-------------------------|--------------------|-----------------------|----------|-------|
| 08 85 15 S 1/2" | 20 | 13 03 11 | RR1/2" | RTPR1/2" | 108 | G1/2" |
| 08 85 15 S 3/4" | 40 | 13 03 11 | RR3/4" | RTPR3/4" | 103 | G3/4" |

Note: 2-way valves and couplers are not integral part of the suction valve and therefore, must be ordered separately.

3D drawings available at www.vuototecnica.net