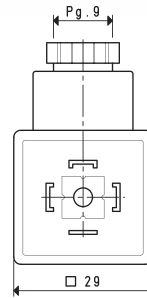
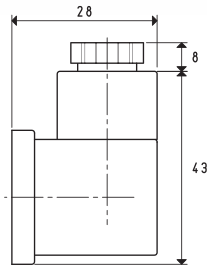


## SOLENOID VALVE ACCESSORIES AND SPARE PARTS

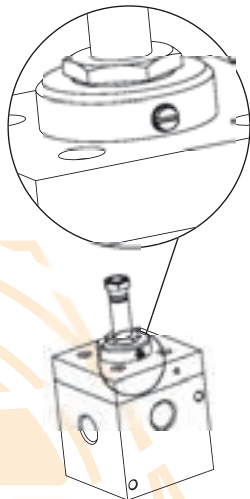


### COIL CONNECTORS

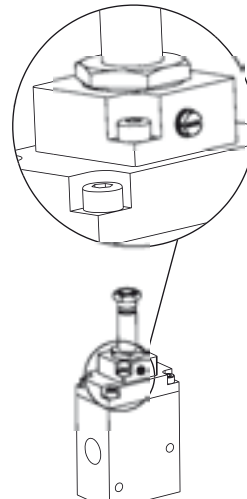
Art.	Contact nominal capacity		Conductor max. section	Operating temperature	Ø cable	Weight	Notes
	A		mm <sup>2</sup>	°C	mm	g	
<b>00 07 63</b>	10	max 16	1.5	-40 ÷ +90	6 ÷ 8	24	Standard
<b>00 07 101</b>	10	max 16	1.5	-40 ÷ +90	6 ÷ 8	24	with LED
<b>00 07 186</b>	10	max 16	1.5	-40 ÷ +90	6 ÷ 8	24	with LED and filtre
<b>Coil art.</b>							
00 07 03 - 00 07 04 - 00 07 05 - 00 07 06 - 00 07 215 - 00 07 216 - 00 07 217 - 00 07 218 - 00 07 219							
00 07 256 - 00 07 257 - 00 07 258 - 00 07 259							

## SM DEVICE FOR MANUALLY OPENING AND CLOSING THE SOLENOID VALVES

*This small cam, which can be activated by a screwdriver, acts on the mobile core of the actuators causing their commutation. This device is installed, upon request, on compressed-air pilot-operated 3-way solenoid valves art. 07 .. 11 or vacuum solenoid valves art. 07 .. 40, to allow their opening and closing in absence of electricity. To order it, all you have to do is add the letters SM to the article of the solenoid valve.*



SM device installation on solenoid valve art. 07 .. 40



SM device installation on solenoid valve art. 07 .. 11