

TANKS FOR VERTICAL SAFETY PUMPSETS WITH THREE VACUUM PUMPS

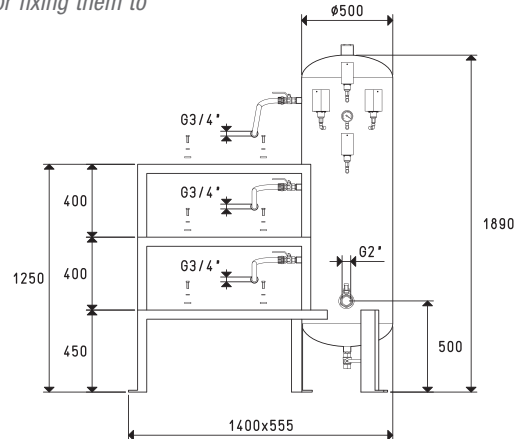
Vertical safety pumpset tanks have a circular section and are made with welded sheet steel with perfect vacuum seal, while the pump support frame, which is welded to the tanks with a volume up to 500 litres and is autonomous above that volume, is made with profiled steel.

Both the tank and the support frame are varnished with special corrosion and water condensation-resistant paint.

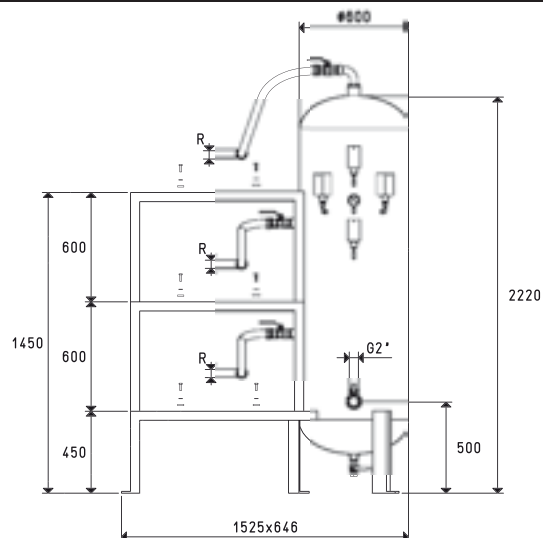
They are set for the installation of three vacuum pumps and a switchgear to be selected among those in the table, and are equipped with:

- Four vacuum switches, of which three are for adjusting the vacuum level within which each pump must operate and one is for determining the minimum safety value, under which the alarm sets off.
- A vacuum gauge for a direct reading of the vacuum level in the tank.
- Three check valves for the pumps that do not have them
- Three manual valves for pump exclusion.
- A manual valve for vacuum interception.
- A cock for condensation drainage.
- Hoses and fittings for connecting the pumps to the tank and screws for fixing them to the support frame.

Available with various volumes, from 300 to 2000 litres.

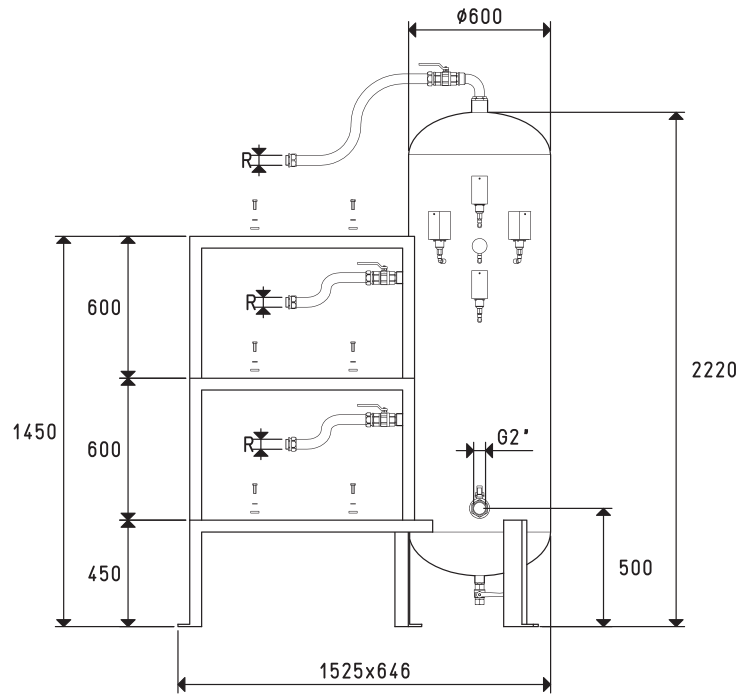


Art.	Tank	Weight	For:		Recommended filtre accessories art.
			3 pumps	Switchgear	
	Litres	Kg	Mod.	art.	
DS3V 300 01	300	112	VTL 25/FG - VTL 30/FG - VTL 35/FG	DS0 300 95	FB 60 / FC 60

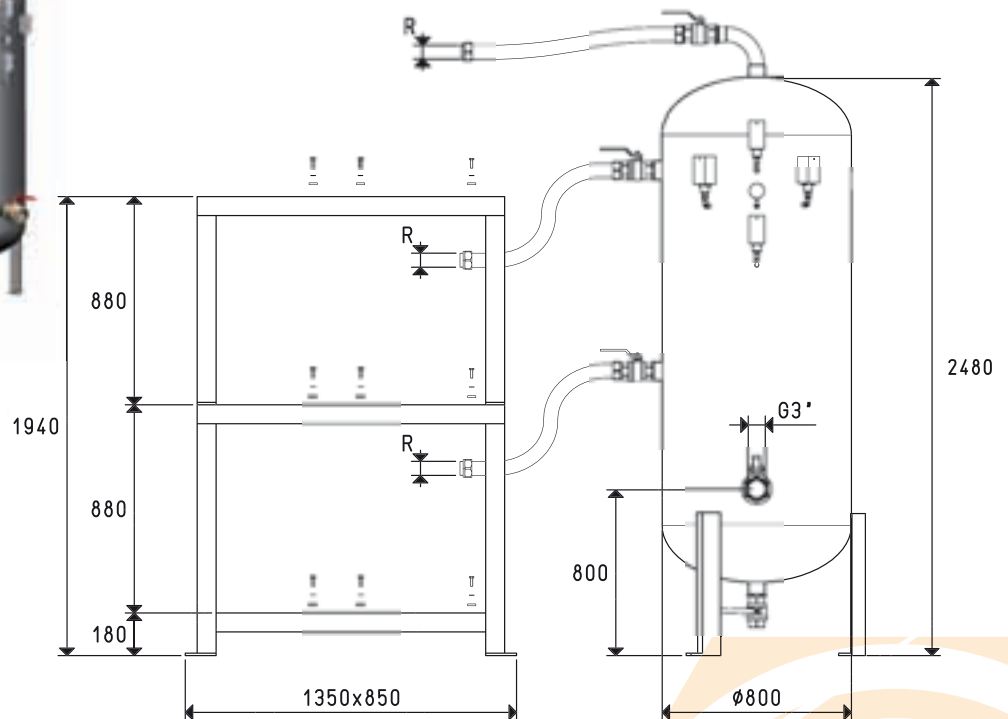


Art.	Tank	Weight	R	For:		Recommended filtre accessories art.
				3 pumps	Switchgear	
	Litres	Kg	Ø	Mod.	art.	
DS3V 500 01	500	192	G1"	VTL 50/G1	DS0 300 95	FB 60 / FC 60
DS3V 500 02	500	192	G1"1/4	VTL 75/G1	DS0 300 95	FB 60 / FC 60

TANKS FOR VERTICAL SAFETY PUMPSETS WITH THREE PUMPS

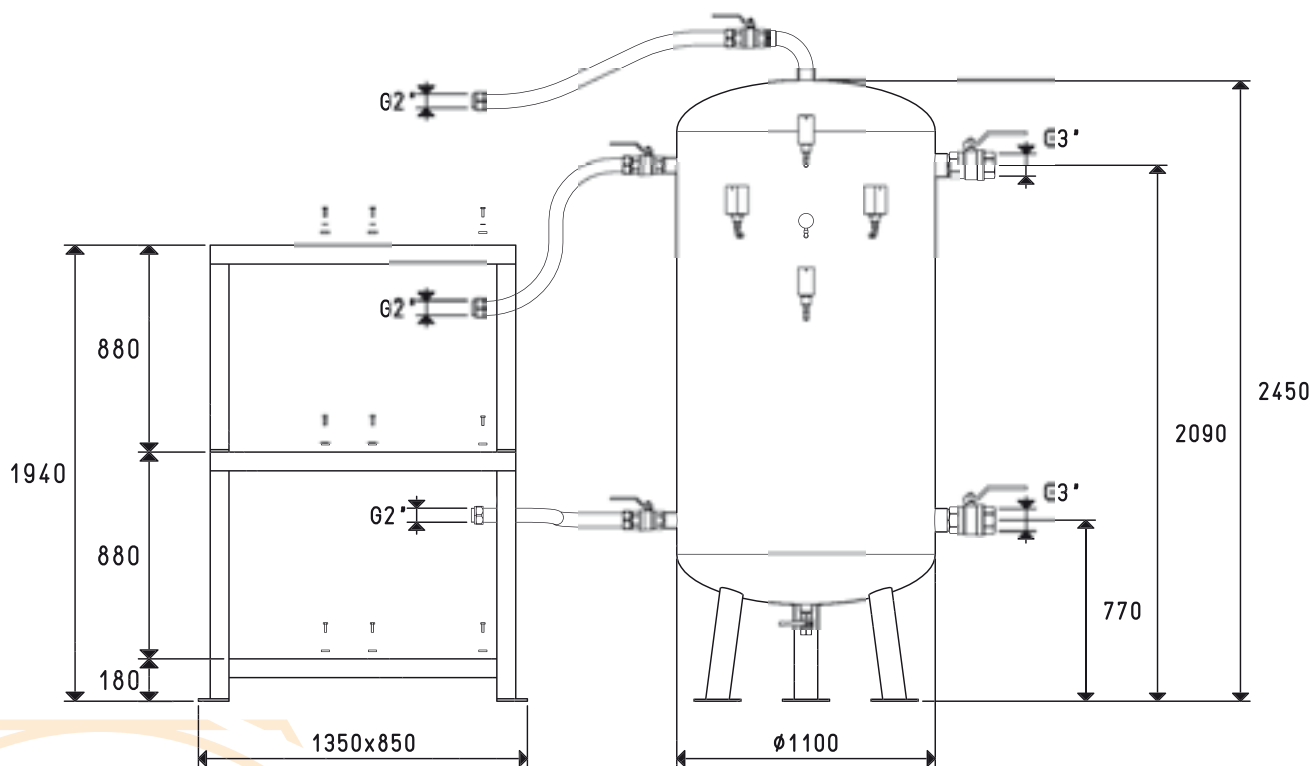


Art.	Tank	Weight	R	For:		Recommended filtre accessories art.
	Litres	Kg	Ø	3 pumps Mod.	Switchgear art.	
DS3V 500 03	500	192	G1"1/4	MV 40 - MV 60 - MV 100	DS0 300 95	FB 60 / FC 60



Art.	Tank	Weight	R	For:		Recommended filtre accessories art.
	Litres	Kg	Ø	3 pumps Mod.	Switchgear art.	
DS3V 1000 01	1000	280	G1"1/2	MV 160R	DS0 300 95	FC 80
DS3V 1000 02	1000	280	G2"	MV 200R - MV 300R	DS0 300 96	FC 80

TANKS FOR VERTICAL SAFETY PUMPSETS WITH THREE PUMPS



3D drawings available at www.vuototecnica.net

Art.	Tank	Weight	3 pumps	For:	Recommended
	Litres	Kg	Mod.	Switchgear	filtre accessories
				art.	art.
DS3V 2000 01	2000	640	MV 200R - MV 300R	DSO 300 96	FC 80