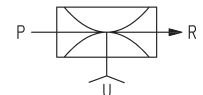
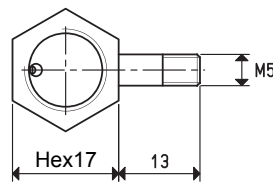
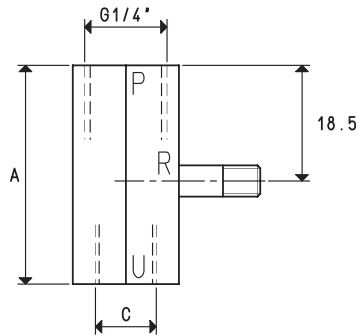


IN-LINE SINGLE-STAGE VACUUM GENERATORS GV 1, GV 2 and GV 3

The operation of these vacuum generators is also based on the Venturi principle.

Their distinctive feature compared with traditional vacuum generators are the two air and vacuum supply connections located in-line, while the exhaust connection of the sucked and exhaust air is orthogonal to them.

The advantages of these generators include reduced overall dimensions, easy maintenance and easy assembly. These vacuum generators can be assembled directly onto the vacuum cup supports or vacuum cup holders. They are fully made with anodised aluminium, except for the exhaust nozzle which is made with brass.



P=COMPRESSED AIR CONNECTION		R=EXHAUST		U=VACUUM CONNECTION					
Art.				GV1		GV2		GV3	
Quantity of sucked air	cum/h	1.0	1.0	1.0	1.0	1.0	1.0	1.0	1.0
Max. vacuum level	-KPa	60	75	85	60	75	85	60	75
Final pressure	mbar abs.	400	250	150	400	250	150	400	250
Supply pressure	bar (g)	3	4	5	3	4	5	3	4
Air consumption	NI/s	0.5	0.6	0.7	0.5	0.6	0.7	0.5	0.6
Working temperature	°C			-20 / +80		-20 / +80		-20 / +80	
Noise level	dB(A)			70		70		70	
Weight	g			19		20		21	
A				30		35		38	
C	∅			M5		G1/8"		G1/4"	

Note: All the vacuum data indicated in the table are valid at the normal atmospheric pressure of 1013 mbar and are obtained with a constant supply pressure.

3D drawings available at www.vuototecnica.net