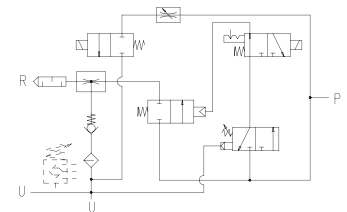
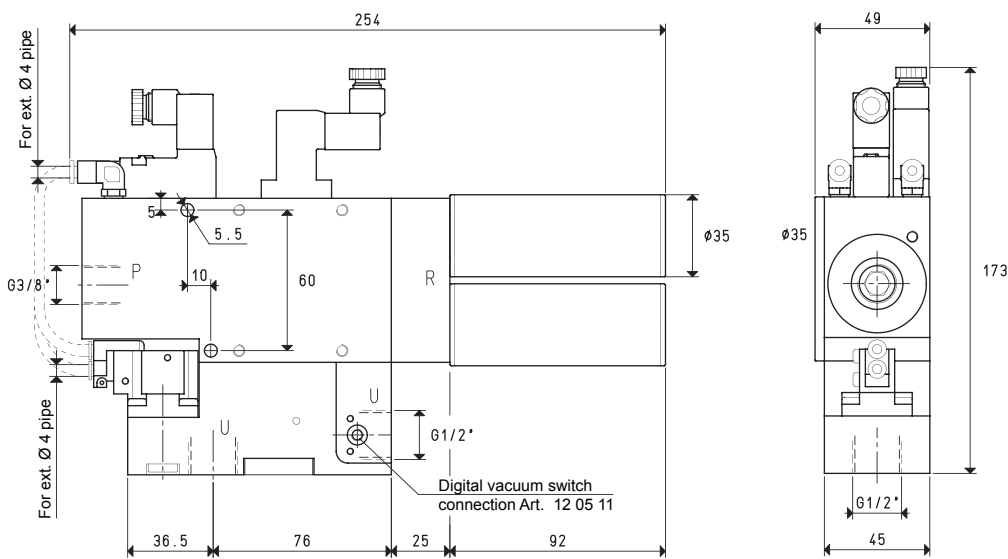


SINGLE-STAGE AND MULTI-FUNCTION VACUUM GENERATORS AVG 18 and AVG 25



P=COMPRESSED AIR CONNECTION R=EXHAUST U=VACUUM CONNECTION

Art.				AVG 18		AVG 25	
Max. quantity of sucked air	cum/h	16.5	17.0	17.4	24.5	25.0	25.2
Max. vacuum level	-KPa	60	70	85	60	70	85
Final pressure	mbar abs.	400	300	150	400	300	150
Supply pressure	bar (g)	4	5	6	4	5	6
Air consumption	NI/s	4.3	5.3	6.4	6.5	8.0	9.6
Max. quantity of air blown at 6 bar (g)	l/min			140			140
Bistable supply solenoid valve	NO/NC			NO/NC			NO/NC
Electric absorption	W			1			1
Ejection solenoid valve position	NC			NC			NC
Electric absorption	W			4			4
Supply voltage	V			24 DC			24 DC
Class of protection	IP			65			65
Working temperature	°C			-10 / +60			-10 / +60
Noise level	dB(A)			63			65
Weight	Kg			1.67			1.67

Note: To order the generator provided with digital vacuum switch, add the letter V to the code (e.g.: AVG 25 V).

Note: All the vacuum data indicated in the table are valid at the normal atmospheric pressure of 1013 mbar and are obtained with a constant supply pressure.

Conversion ratio: inch = $\frac{mm}{25.4}$; pounds = $\frac{g}{453.6} = \frac{Kg}{0.4536}$

GAS-NPT thread adapters available at page 1.117

3D drawing available at www.vuototecnica.net