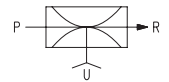
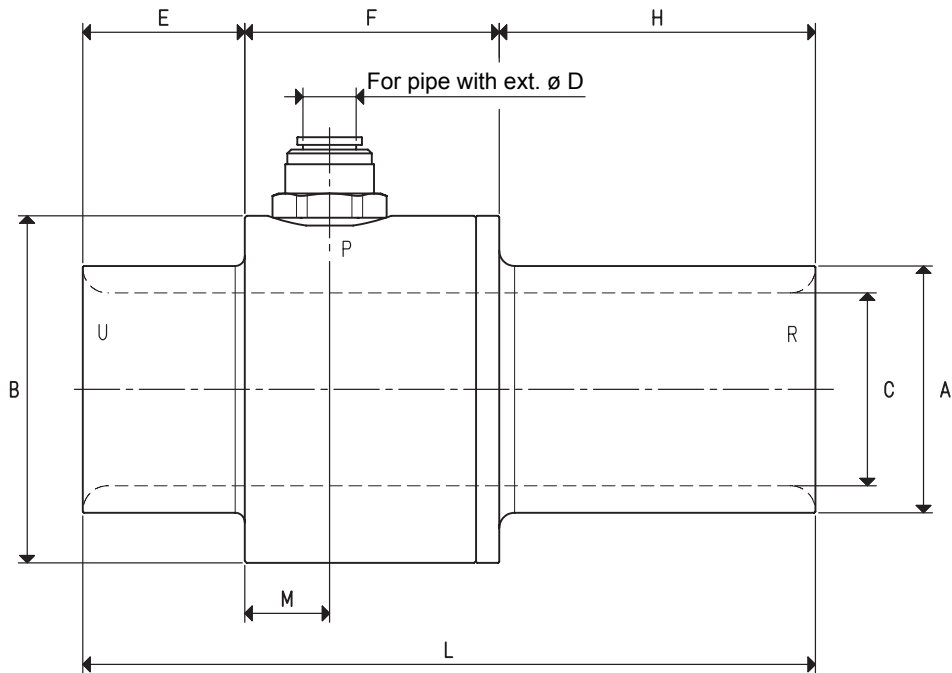


FLOW GENERATOR VACUUM JET, CX 25, CX 38 and CX 50



P=COMPRESSED AIR CONNECTION

R=EXHAUST

U=VACUUM CONNECTION

Art.		CX 25	CX 38	CX 50
Max. quantity of sucked air at 6 bar (g)	cum/h	150	310	405
Max. quantity of blown air at 6 bar (g)	cum/h	210	400	525
Max. vacuum level	-KPa	13	10	8
Final pressure	mbar abs.	870	900	920
Max. supply pressure	bar (g)	6.0	6.0	6.0
Air consumption at 6 bar (g)	NI/s	16.6	25.0	33.3
Working temperature	°C	-20 / +80	-20 / +80	-20 / +80
Noise level	dB(A)	100	103	103
Weight	g	560	800	1090
A	∅	38	51	64
B	∅	60	75	90
C	∅	25	38	50
D	∅	10	12	16
E		42	42	42
F		66	66	66
H		82	82	82
L		190	190	190
M		22	22	22

Note: All the vacuum data indicated in the table are valid at the normal atmospheric pressure of 1013 mbar and are obtained with a constant supply pressure.

By adding the letter I to the article, the generator will be supplied in the stainless steel version (E.g.: CX 38 I).

Conversion ratio: inch = $\frac{\text{mm}}{25.4}$; pounds = $\frac{\text{g}}{453.6} = \frac{\text{Kg}}{0.4536}$

GAS-NPT thread adapters available at page 1.117