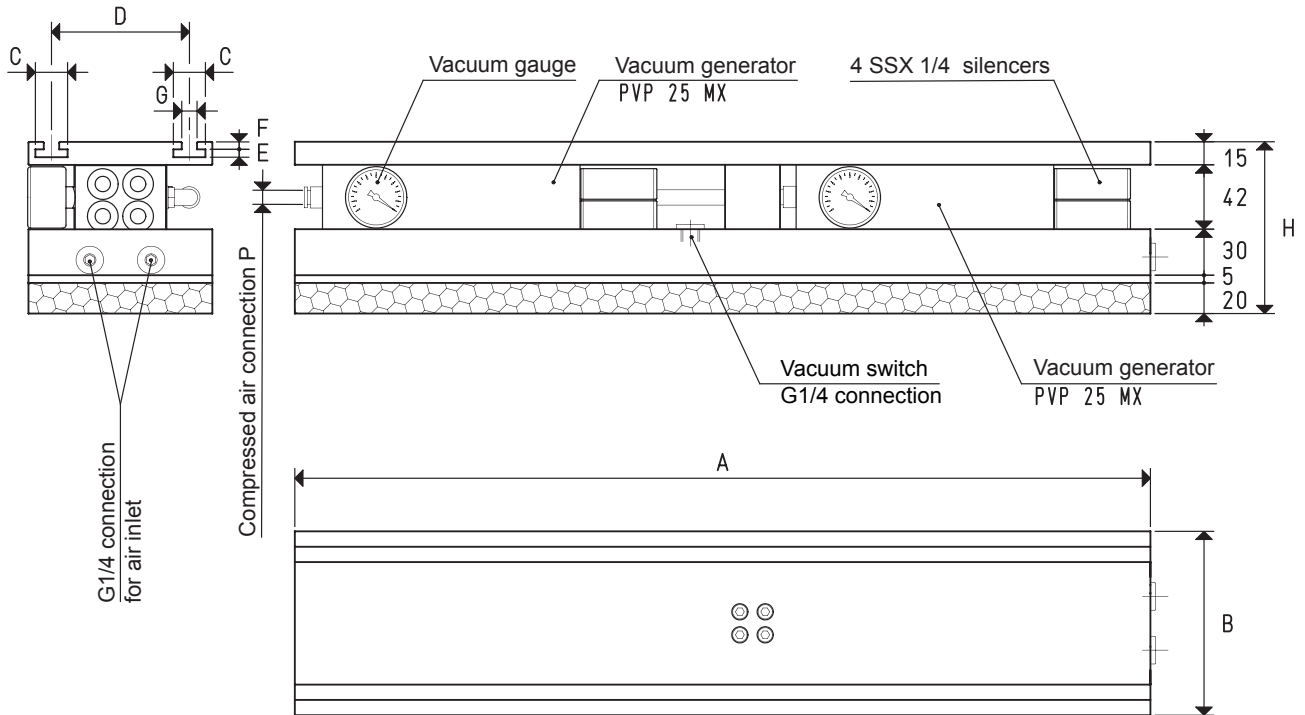


# OCTOPUS GRIPPING BAR



Art.		BO 12 60 X	BO 12 80 X
<b>Suction plate</b>	art.	PX 12 60	PX 12 80
<b>Gripping force</b>	Kg	42.2	56.3
<b>N° 2 vacuum generators</b>	art.	PVP 25 MX	PVP 25 MX
<b>Max. supply pressure</b>	bar (g)	6	6
<b>Max. vacuum level</b>	-KPa	90	90
<b>Air consumption at 6 bar (g)</b>	NI/s	6.4	6.4
<b>Quantity of sucked air</b>	cum/h	62	62
<b>Working temperature</b>	°C	-20 / +80	-20 / +80
<b>Weight</b>	Kg	8.1	10.8
<b>A</b>		600	800
<b>B</b>		120	120
<b>C</b>		21	21
<b>D</b>		90	90
<b>E</b>		5.2	5.2
<b>F</b>		4.8	4.8
<b>G</b>		10	10
<b>H</b>		112	112
<b>P</b>	Compressed air pipe connection ext. Ø	8	8

**Note:** The code BO 12 .. X, identifies the OCTOPUS bar (g) base box with the associated suction plate PX, the slotted support plate and the vacuum generators indicated in the table.  
All the values shown in the table are valid at a normal atmospheric pressure of 1013 mbar and obtained with a constant supply pressure.

3D drawings available at [www.vuototecnica.net](http://www.vuototecnica.net)