

SAFETY SUCTION UNITS WITH SYPHON FILTRE



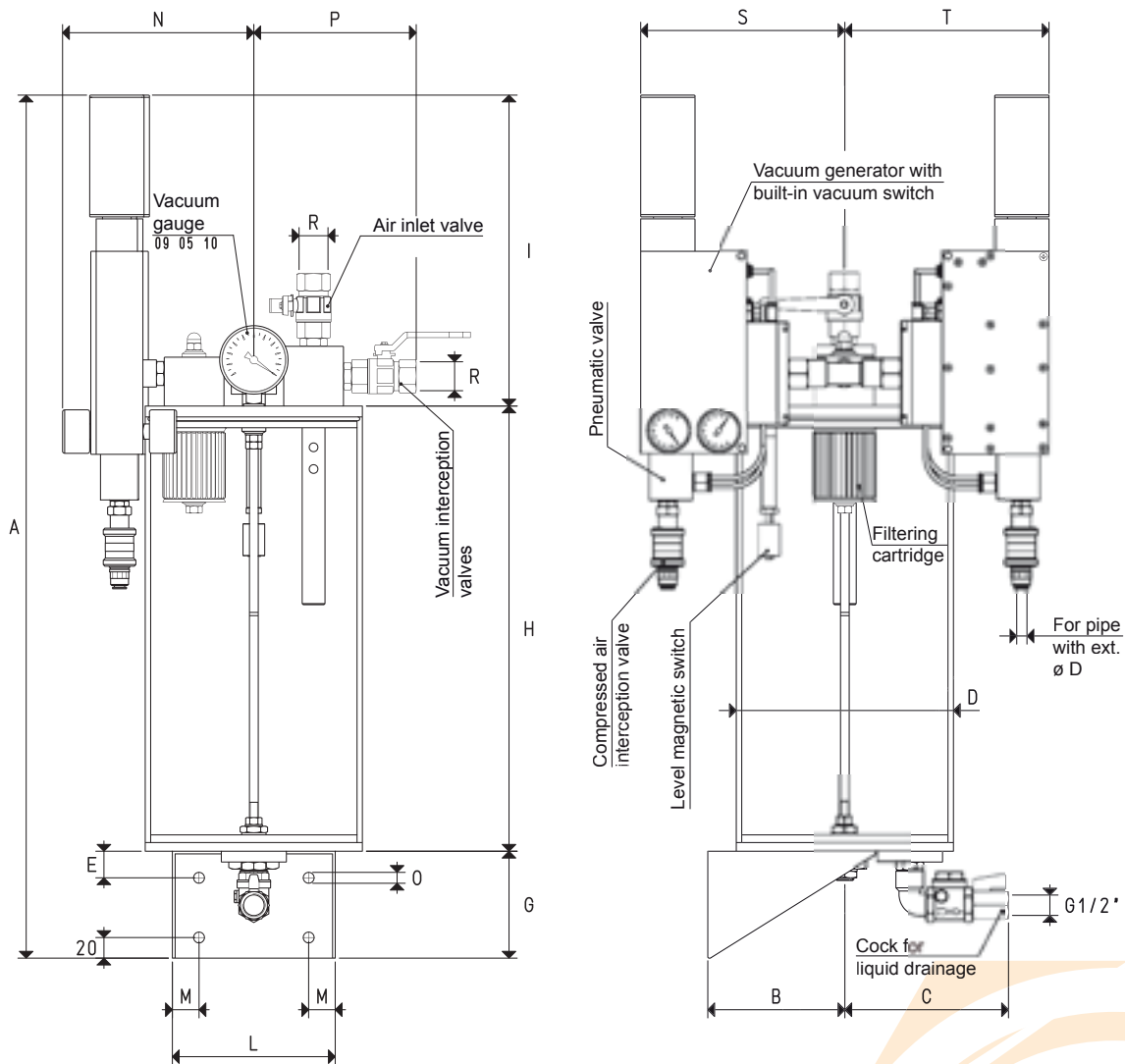
These units have the same functions as the previous ones, but they differ for their automation and composition. In fact, these devices are composed of:

- A standard syphon filtre already described in Chapter 5.
- Two compressed air-operated multistage vacuum generators with built-in energy-saving system ES.
- A vacuum gauge for a direct reading of the vacuum level in the container.
- Two sleeve valves for compressed air interception.

These safety suction units normally provide for the operation of one vacuum generator with subsequent automatic insertion of the other one for higher consumptions and when, for whatever reason, the plant vacuum level goes below the preset minimum value. All this also guarantees continuous operation even in presence of a vacuum generator breakdown. The vacuum level, preset with the vacuum switch, is automatically maintained in the plexiglas container. These suction units with syphone filtre are suited for vacuum cup clamping systems for gripping glass, marble, granite, light alloys and in all those cases with a considerable presence of refrigerating liquids.

They are also recommended for sucking They are also recommended for sucking creamy or muddy substances, hard to handle with traditional pumps.

These suction assemblies are fed by compressed air at a pressure of 4÷6 bar (g) only. Upon request they can also be supplied in different versions.



Art.	A	B	C	d	D	E	G	H	I	L	M	N	O	P	R	S	T	N° 2 vacuum generators art.	Capacity l	Weight Kg
GAS FS 20 ES	795	130	175	8	200	25	100	410	290	150	25	175	10	145	G1/2"	188	188	PVP 25 MDX ES	10.5	11.5
GAS FS 25 ES	745	150	195	8	240	25	100	510	290	170	30	175	11	180	G3/4"	188	188	PVP 50 MDX ES	19.5	14.0
GAS FS 30 ES	885	190	225	12	300	30	120	610	330	200	40	190	11	220	G1"	201	201	PVP 75 MDX ES	38.0	24.0

3D drawings available at www.vuototecnica.net