

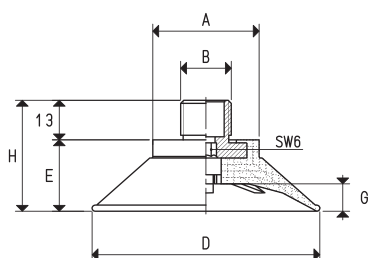
CUPS WITH VULCANISED SUPPORT

These cups are very similar to those described in the previous page, they differ only for their round lip and their internal cleats.

These features allow them to be used even in the heaviest conditions.

The field of use is the same.

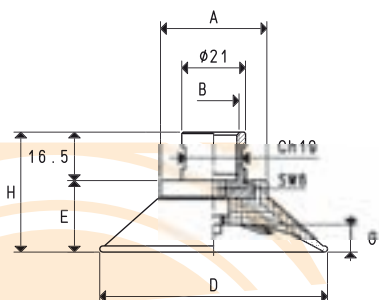
They are also made with BENZ compound and the galvanised steel support is vulcanised onto the cup. These cups are also available in natural para rubber and silicon.



CUPS WITH MALE VULCANISED SUPPORT

| Art. | Force Kg | A Ø | B Ø | D Ø | E | G | H | Support material | Weight g |
|-------------------------|-------------|--------|--------|--------|------|----|------|---------------------|-------------|
| 08 50 99 * | 4.90 | 30 | G3/8" | 50 | 23.5 | 9 | 36.5 | steel | 43.2 |
| 08 75 99 * | 11.04 | 35 | G3/8" | 75 | 23.5 | 9 | 36.5 | steel | 59.2 |
| 08 100 99 * | 19.62 | 35 | G3/8" | 100 | 40.0 | 12 | 53.0 | steel | 113.2 |
| 08 50 99 1/4" * | 4.90 | 30 | G1/4" | 50 | 23.5 | 9 | 36.5 | steel | 39.4 |
| 08 75 99 1/4" * | 11.04 | 35 | G1/4" | 75 | 23.5 | 9 | 36.5 | steel | 55.2 |
| 08 100 99 1/4" * | 19.62 | 35 | G1/4" | 100 | 40.0 | 12 | 53.0 | steel | 109.2 |

* Complete the code indicating the compound: B= BENZ rubber; N= natural para rubber; S= silicon



CUPS WITH FEMALE VULCANISED SUPPORT

| Art. | Force Kg | A Ø | B Ø | D Ø | E | G | H | Support material | Weight g |
|----------------------|-------------|--------|--------|--------|------|----|------|---------------------|-------------|
| 08 50 99 F * | 4.90 | 31 | G3/8" | 50 | 23.5 | 9 | 40.0 | steel | 55.6 |
| 08 75 99 F * | 11.04 | 35 | G3/8" | 75 | 23.5 | 9 | 40.0 | steel | 70.5 |
| 08 100 99 F * | 19.62 | 35 | G3/8" | 100 | 40.0 | 12 | 56.5 | steel | 118.8 |

* Complete the code indicating the compound: B= BENZ rubber; N= natural para rubber; S= silicon