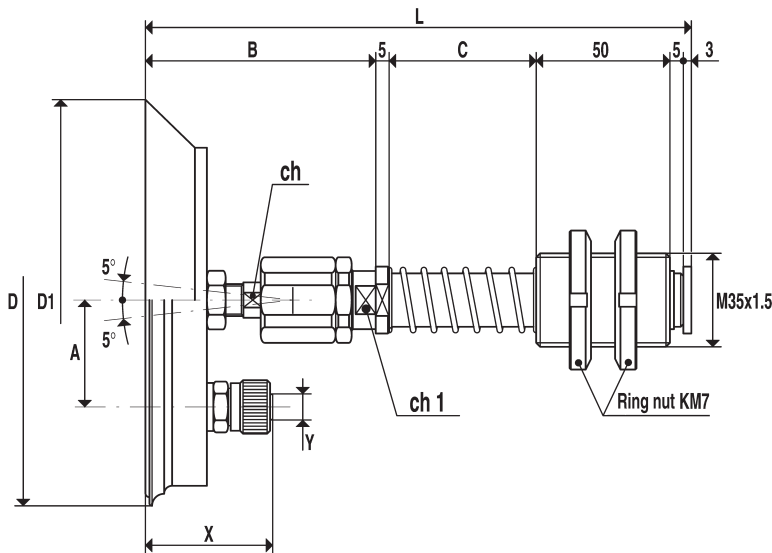


[Special articulated cup holders]



These cup holders, equipped with a special ball joint in hardened steel, allow the cup to fit itself to the surface of the load to be lifted, even if it is not perfectly parallel to the cup itself or to compensate possible verticality errors that often occur between the cup holder and the fixing group of the machine. Technical and constructive features are the same as the ones of the special cup holders previously described.

N.B.

Cups are not included in the following part numbers of the cup holder and therefore, they must be ordered separately.

The real strokes are:

C = 55 mm 37
C = 110 mm 84

Cup holder with rapid straight fitting for plastic hose

| Art. | Force Kg. | A | B | *C | D Ø | D1 Ø | L | X | Y Ø | ch | ch1 | Art. Cup |
|------------|-----------|------|-----|----|--------|---------|-----|----|--------|----|-----|-------------|
| 06 110 12 | 23.74 | 26.0 | 77 | 55 | 114 | --- | 195 | 38 | 6 | 12 | 19 | 01 110 10 |
| 06 110 17 | 23.74 | 26.0 | 86 | 55 | --- | 110 | 204 | 47 | 6 | 12 | 19 | 08 110 15 |
| 06 150 12 | 45.00 | 30.0 | 83 | 55 | 154 | --- | 201 | 44 | 6 | 12 | 19 | 01 150 10 |
| 06 150 17 | 45.00 | 40.0 | 86 | 55 | --- | 150 | 204 | 50 | 9 | 12 | 19 | 08 150 15 |
| 06 200 12 | 78.50 | 47.5 | 88 | 55 | --- | 200 | 206 | 52 | 9 | 12 | 19 | 08 200 10 |
| 06 220 12N | 63.60 | 70.0 | 95 | 55 | 220 | --- | 213 | 59 | 9 | 12 | 19 | 01 220 10N |
| 06 220 12A | 78.50 | 70.0 | 81 | 55 | 220 | --- | 199 | 45 | 9 | 12 | 19 | 01 220 10A |
| 06 250 12 | 122.60 | 72.5 | 88 | 55 | --- | 250 | 206 | 52 | 9 | 12 | 19 | 08 250 10 |
| 06 300 12 | 176.60 | 89.0 | 115 | 55 | --- | 300 | 233 | 54 | 16 | 19 | 30 | 08 300 10 |
| 06 350 12 | 240.00 | 89.0 | 115 | 55 | --- | 350 | 233 | 54 | 16 | 19 | 30 | 08 350 10 |

* Available also with size "C" mm. 110.