



DIRECT DRIVE 3-WAY VACUUM SOLENOID VALVES WITH BISTABLE IMPULSE SOLENOID PILOT VALVE AND WITH LOW ABSORPTION ELECTRIC COIL

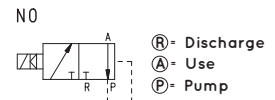
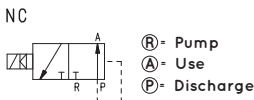
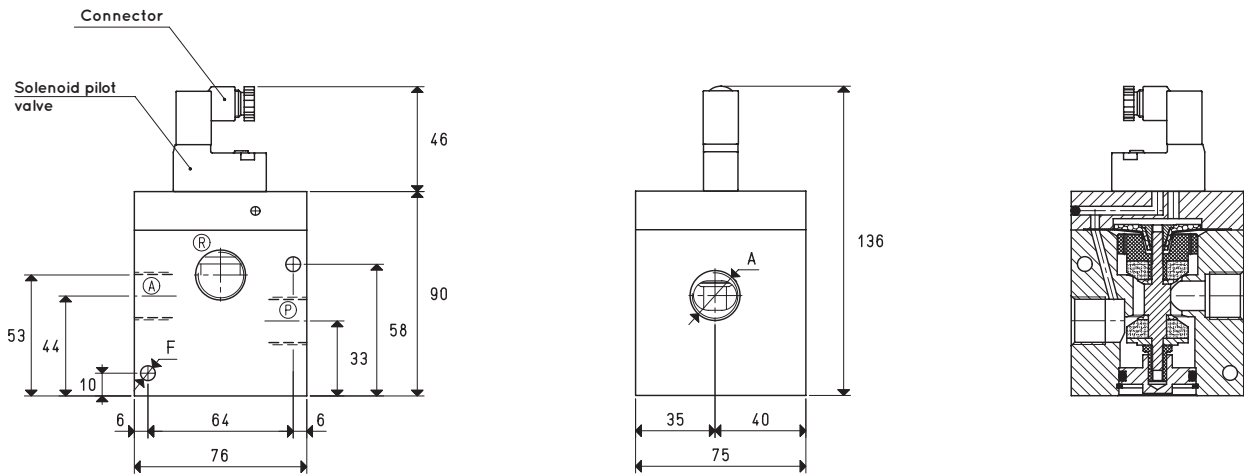
3D drawings are available on vuototecnica.net

These solenoid valves have the same function and the same structure as the previously described three-way valves. Even their structure is the same; what differentiates them are the bistable impulse pilot valve powered by a low absorption fitted electrical coil which, with a simple electrical impulse, exchanges the shutter positions and keeps them there even in absence of electricity, until it receives a new impulse of opposite polarity. For this reason, they can only be supplied with direct current electric coils. Their use is especially recommended in all those cases requiring maximum connection security at the vacuum source, even in the absence of electrical power supply. The electric coils of the solenoid pilot valve are fully plastic-coated in synthetic resin, watertight, insulation class F (up to 155°C) as per standard EN 60664, with 3 mm two-terminal electrical connections for connectors in compliance with EN 175301-803 - C. Protection degree IP 54; IP 65 with connector inserted. Available for voltages 12-24VDC. Tolerance permitted on the nominal voltage value: ±10%. Maximum electric power: 1 W.

The connector can be rotated 180° on the coil and can be supplied, upon request, with LED lights, anti-interference circuit and/or with protection devices against overvoltage and polarity reversal. The push-button device for their manual activation cannot be installed on these solenoid valves.

Technical features

Operating pressure: from 0.5 to 850 absolute mbar
 Temperature of suctioned fluid: from -5 to +60°C



Item	A Ø	Max flow rate m³/h	Level of vacuum abs. mbar		Reaction time msec		Mouth Ø	Cross-section of passage mm²	F Ø	Weight Kg
			min	max	energ.	de-energ.				
07 03 63 NC	G1/2"	20	850	0.5	33	17	15	176	6.5	1.35
07 03 63 NO					22	20				
07 04 63 NC	G3/4"	40	850	0.5	33	17	20	314	6.5	1.30
07 04 63 NO					22	20				

Spare parts				07 03 63 NC	07 03 63 NO	07 04 63 NC	07 04 63 NO
Solenoid valve sealing kit with pilot membranes	item			00 07 279	00 07 279	00 07 279	00 07 279
Pilot membranes for solenoid valves	item			00 07 104	00 07 104	00 07 104	00 07 104

Note: Specify the voltage of the electric coil when ordering. (Example: 07 03 63 NC V24-CC)

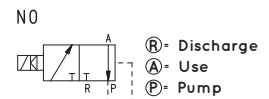
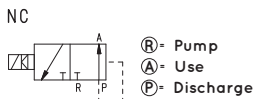
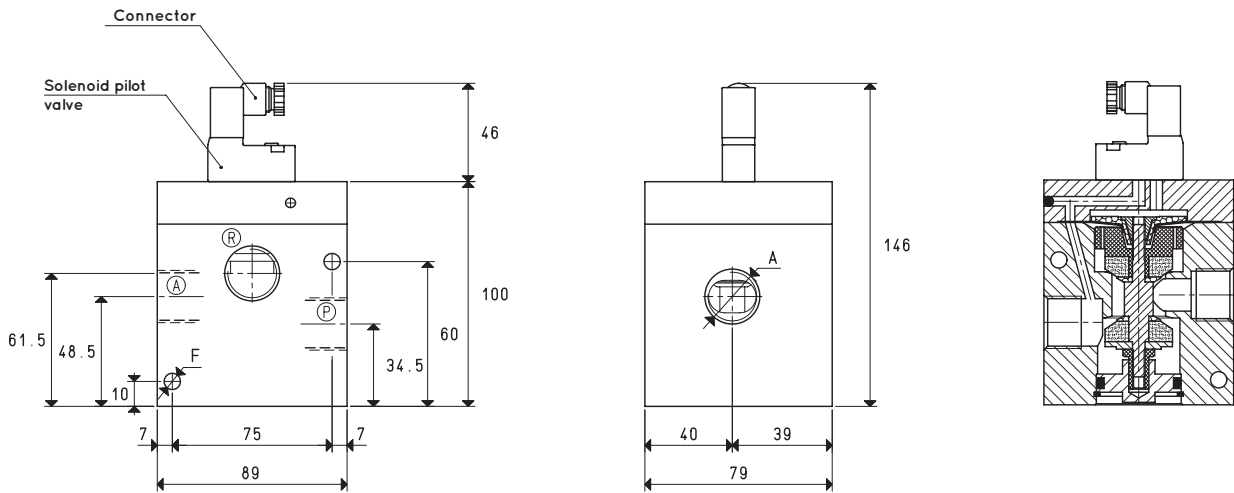
The connector is not integral parts of the solenoid valve and, therefore, must be ordered separately (See accessories for solenoid valves).

Transformation ratio: N (newton) = Kg x 9.81 (force of gravity)

inch = $\frac{\text{mm}}{25.4}$; pounds = $\frac{\text{g}}{453.6} = \frac{\text{Kg}}{0.4536}$

Adapters for GAS - NPT threading available on page 1.134

DIRECT DRIVE 3-WAY VACUUM SOLENOID VALVES WITH BISTABLE IMPULSE SOLENOID PILOT VALVE AND WITH LOW ABSORPTION ELECTRIC COIL



Item	A Ø	Max flow rate m³/h	Level of vacuum abs. mbar		Reaction time msec		Mouth Ø	Cross-section of passage mm²	F Ø	Weight Kg
			min	max	energ.	de-energ.				
07 05 63 NC	G1"	90	850	0.5	42	20	25	490	6.5	1.65
07 05 63 NO					28	22				

Spare parts		07 05 63 NC	07 05 63 NO
Solenoid valve sealing kit with pilot membranes	item	00 07 280	00 07 280
Pilot membranes for solenoid valves	item	00 07 105	00 07 105

Note: Specify the voltage of the electric coil when ordering. (Example: 07 05 63 NC V24-CC)

The connector is not integral parts of the solenoid valve and, therefore, must be ordered separately (See accessories for solenoid valves).

Transformation ratio: N (newton) = Kg x 9.81 (force of gravity)

$$\text{inch} = \frac{\text{mm}}{25.4}; \text{pounds} = \frac{\text{g}}{453.6} = \frac{\text{Kg}}{0.4536}$$

Adapters for GAS - NPT threading available on page 1.134