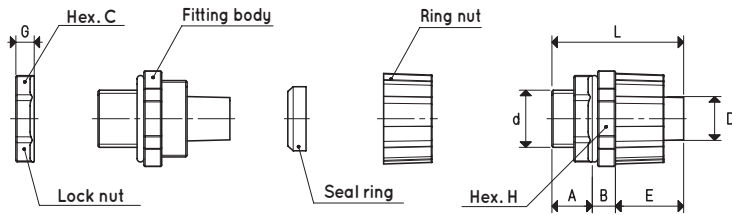
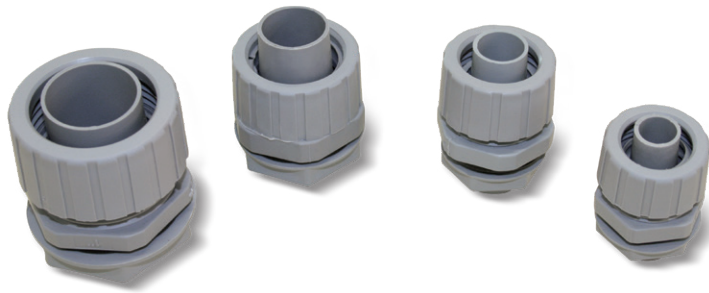




TPR FLEXIBLE HOSE FITTINGS

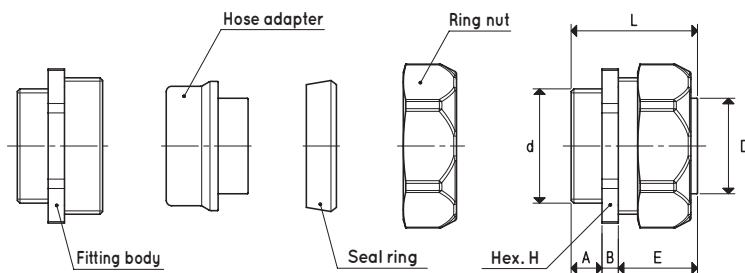
3D drawings are available on vuototecnica.net



RTPR FITTINGS

| Item | d Ø | A | B | C | D Ø | E | G | H | L | Material | Colour | Weight g |
|------------------|--------|------|------|----|--------|------|----|----|------|----------|--------|-------------|
| RTPR 3/8" | G3/8" | 14.5 | 8.5 | 26 | 12.0 | 23.5 | 6 | 28 | 46.5 | pvc | grey | 12 |
| RTPR 1/2" | G1/2" | 14.5 | 9.0 | 28 | 15.5 | 26.5 | 7 | 33 | 50.0 | pvc | grey | 18 |
| RTPR 3/4" | G3/4" | 14.0 | 10.5 | 35 | 20.8 | 26.5 | 9 | 38 | 51.0 | pvc | grey | 26 |
| RTPR 1" | G1" | 16.0 | 9.0 | 41 | 26.5 | 32.5 | 10 | 44 | 57.5 | pvc | grey | 36 |

Operating temperature: -10° / +60 °C



RTPR FITTINGS

| Item | d Ø | A | B | D Ø | E | H | L | Material | Weight g |
|--------------------|---------|----|---|--------|------|----|------|---------------------|-------------|
| RTPR 1" 1/4 | G1" 1/4 | 11 | 6 | 34.5 | 28.5 | 52 | 45.5 | nickel-plated brass | 340 |
| RTPR 1" 1/2 | G1" 1/2 | 14 | 7 | 39.5 | 34.0 | 60 | 55.0 | nickel-plated brass | 530 |
| RTPR 2" | G2" | 14 | 7 | 50.0 | 33.0 | 74 | 54.0 | nickel-plated brass | 596 |

Operating temperature: -20° / +60 °C

Transformation ratio: N (newton) = Kg x 9.81 (force of gravity)

inch = $\frac{\text{mm}}{25.4}$; pounds = $\frac{\text{g}}{453.6} = \frac{\text{Kg}}{0.4536}$

Adapters for GAS - NPT threading available on page 1.130