



FCL 4, FCL 5, FCL 6 and FCL 7 IN-LINE SUCTION FILTERS

These large in-line filters retain impurities and very fine dust, interfering with the flow rate in a negligible manner.

They are composed of a cylindrical transparent Plexiglass body closed by two anodised aluminium flanges kept in place by Seeger rings, where all the threaded male or female connections and seals are located; inside there is a filtering cartridge.

The filtering cartridges illustrated and described on this page, installed in their own container, are produced with different materials that can be identified with the following abbreviations:

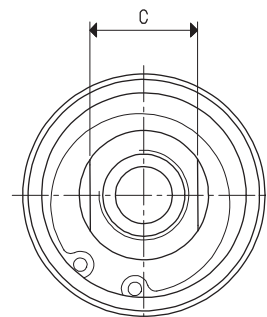
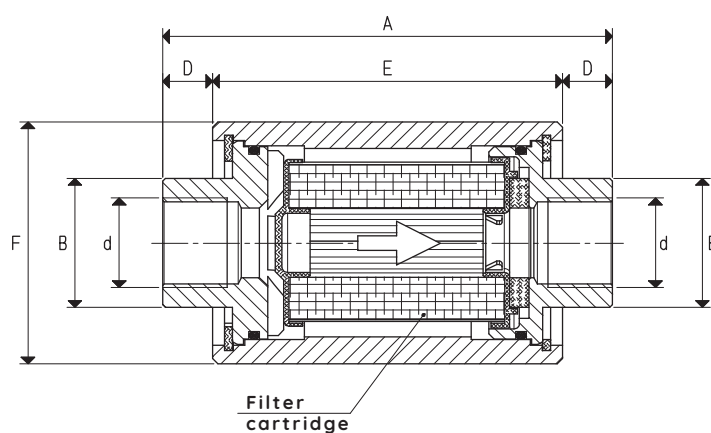
- **Series RP**. Pleated paper quick coupling filtering cartridge with double O-ring.
- **Series RS**. Pleated polypropylene mesh quick coupling filtering cartridge with double O-ring.
- **Series RA**. AISI 304 stainless steel mesh quick coupling filtering cartridge with double O-ring.

The filters can be inspected by simply removing one of the two flanges.

Technical features

Operating pressure: from 0.5 to 3000 absolute mbar

Fluid temperature: from -20 to +60°C



Item	d Ø	A	B Ø	C	D	E	F Ø	Flow rate max m³/h	Cartridge spare part item	Weight g
FCL 4P	G3/4"	207	50	44	17	173	80	40	SP / 5M	1130
FCL 4S	G3/4"	207	50	44	17	173	80	40	SS / 5M	1135
FCL 4A	G3/4"	207	50	44	17	173	80	40	SA / 5M	1160
FCL 5P	G1"	207	50	60	17	173	80	70	SP / 5M	1120
FCL 5S	G1"	207	50	60	17	173	80	70	SS / 5M	1125
FCL 5A	G1"	207	50	60	17	173	80	70	SA / 5M	1150
FCL 6P	G1" 1/2	207	70	60	17	173	110	200	RP / 5	1290
FCL 6S	G1" 1/2	207	70	60	17	173	110	200	RS / 5	1300
FCL 6A	G1" 1/2	207	70	60	17	173	110	200	RA / 5	1350
FCL 7P	G2"	332	78	70	17	298	110	300	RP / 10/57	1430
FCL 7S	G2"	332	78	70	17	298	110	300	RS / 10/57	1445
FCL 7A	G2"	332	78	70	17	298	110	300	RA / 10/57	1500