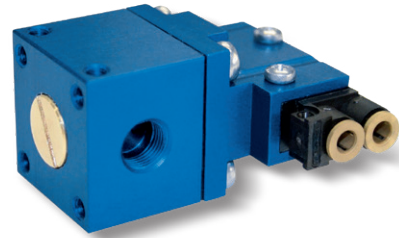
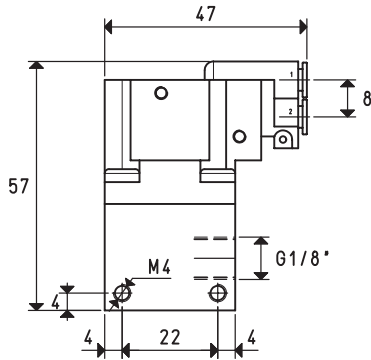


① - MINI PNEUMATIC VACUUM SWITCH

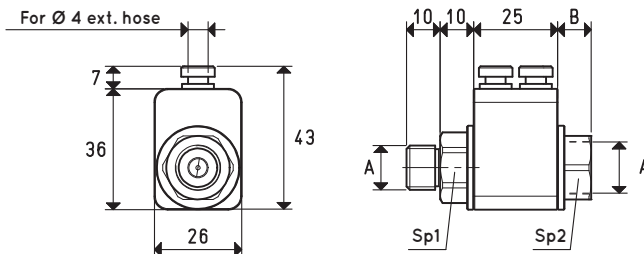
The vacuum switch has the task of removing a pneumatic signal when a specific adjustable level of vacuum is reached. The pressure differential existing between the set maximum value and that of restoring the signal at rest is not adjustable and is equal to about 100 mbar. The pneumatic vacuum switch, installed on the vacuum generators PVP 25 - 75 MDX / MDXLP acting on the coaxial shutter supply valve automatically maintains the maximum and minimum level of vacuum within the differential value.



Item	For generator item	Weight g
12 01 30 X	PVP 25 ÷ 75 MDX/MDXLP	104

② - COAXIAL SHUTTER SERVO-CONTROLLED SUPPLY VALVE

These coaxial shutter valves, pneumatically driven by a vacuum switch or an alternative source, are able to intercept the compressed air supply to the vacuum generators, with pressures between 1.5 and 7 bar. They must be chosen based on the generator power supply connection and the required air quantity.



Item	A Ø	B	Sp1	Sp2	For generator item	Weight g
07 01 71	G 1/4"	10	19	19	PVP 25 ÷ 50 MDX/MDXLP	72
07 02 71	G 3/8"	15	19	19	PVP 50 ÷ 75 MDX/MDXLP	70



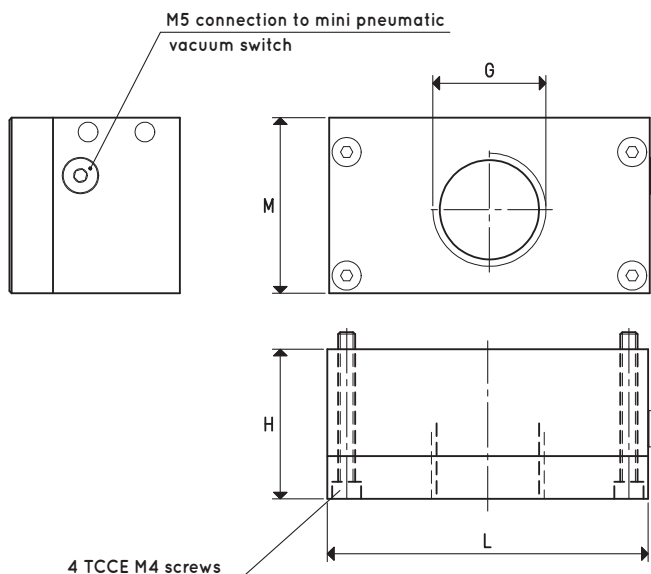
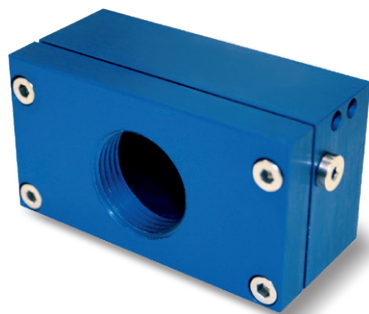
ACCESSORIES FOR VACUUM GENERATORS PVP 25 MDX / MDXLP ÷ PVP 75 MDX / MDXLP

3D drawings are available on vuotecnica.net

③ - MEMBRANE CHECK VALVE

A check valve specially designed to adapt to vacuum generators PVP 25 - 75 MDX / MDXLP.

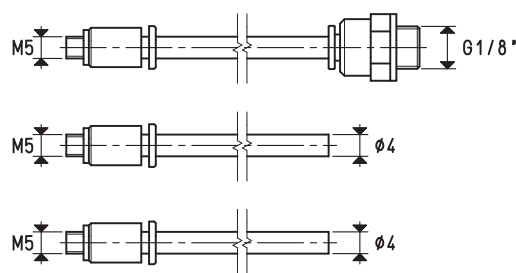
The originality of this valve, besides its shape, consists in its membrane seal component, which is able to guarantee very low pressure drops, rapid intervention and perfect sealing.



Item	G Ø	H	L	M	Weight g	For generator item
10 04 20	G3/4"	35	75	41	165	PVP 25 ÷ 50 MDX / MDXLP
10 05 20	G1"	48	113	58	458	PVP 60 ÷ 75 MDX / MDXLP

④ - FLEXIBLE HOSE KIT WITH FITTINGS

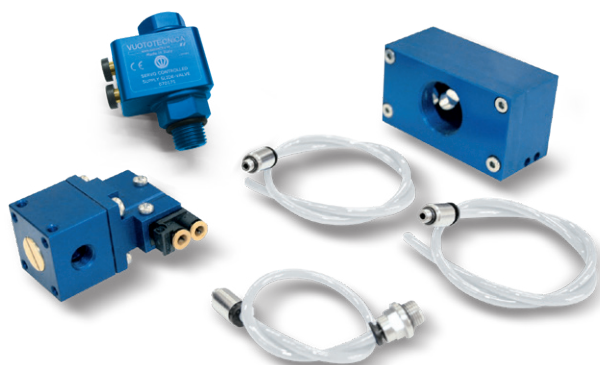
This flexible hose kit is used to connect the mini vacuum switch to the coaxial shutter supply valve and the membrane check valve. The appropriate quick couplings are already assembled at the ends of the tubes, to be screwed to the valve and vacuum switch connections.



Item	For generator item	Weight g
00 15 308	PVP 25 ÷ 75 MDX / MDXLP	16

8

COMPLETE KIT FOR ENERGY SAVING DEVICE ES



Item	For generator item	Weight g
ES 01	PVP 25 ÷ 50 MDX / MDXLP	475
ES 02	PVP 60 ÷ 75 MDX / MDXLP	998

Transformation ratio: N (newton) = Kg x 9.81 (force of gravity)

inch = $\frac{\text{mm}}{25.4}$; pounds = $\frac{\text{g}}{453.6} = \frac{\text{Kg}}{0.4536}$

Adapters for GAS - NPT threading available on page 1.130